

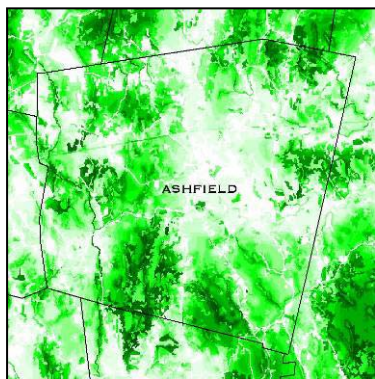


Logger Education

The Renewable Resources Extension Act (RREA) at the University of Massachusetts Amherst

RREA programs conducted by UMass Extension provide education and materials that address critical issues of importance to landowners, natural resource professionals, conservation organizations, natural resource-based business, and municipalities. These programs enable people to make informed decisions and take action to preserve or enhance the quality, productivity and sustainability of natural resources and ecosystems. RREA funds typically leverage \$5 to \$10 in state, private, and/or local funds. In recent years RREA funds were used to support the following activities.

- The MA Coverts Program educates public advocates for forest stewardship. Through a combination of lectures, field trips, discussions and working sessions, participants explore a variety of topics and issues, including: historical perspectives on land use, forest ecology, wildlife habitat, land management and landowner outreach. Seventy-three percent of participants reported that they had made wildlife habitat improvements on land directly under their influence. Twenty-eight percent of surveyed participants reported having taken part in land use or land protection actions 10 or more times since taking the Coverts training.
- Assess the negative impacts of road crossings on fish and other aquatic organism passage as part of the River and Stream Continuity Project. As a result of educational programs and survey materials developed by UMass Extension, bridge and culvert surveys were initiated in the Westfield, Taunton and Housatonic River watersheds. Agencies and local communities have initiated culvert replacement projects to restore river and stream continuity in Chesterfield, Worthington, Somerset, and Hatfield, Massachusetts.



Final biodiversity values for the town of Ashfield. Biodiversity values range from 0 (light; no value) to 1 (dark; high value).

- Develop and implement the Conservation Assessment and Prioritization System (CAPS). CAPS is a computer software program and an approach to prioritizing land for conservation based on the assessment of habitat and biodiversity value for a variety of natural communities. CAPS analyses were recently completed for the Housatonic River watershed and the “Highlands Region” of Massachusetts.

“In small states with modest Extension faculty and staff in natural resources, RREA support is crucial, and makes an enormous difference”

– David Kittredge, Extension Forester, University of Massachusetts Amherst

“I believe that my participation in Coverts has provided me with the knowledge to speak and present land acquisition projects to the town. As a result my town has preserved several hundred acres since I took part in the Coverts workshop.”

– Coverts Participant